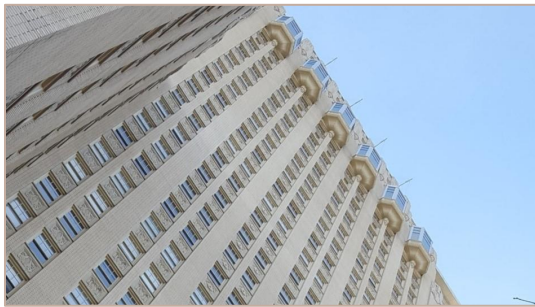


Partial In-Kind Replacement of Stone

Sculptural Detail ***Chase Park Plaza***



Before

At the bottom of the 25th floor balconies the sculptural stones had been deteriorating and falling. With the stone gone, the steel was also deteriorating.

During

Using specialty scaffolds, Staat was able to access the area and install new steel along with new cast stone to match the original stone pieces

After

The stone has been reinstalled. Using new pins and anchors precast into the stone, Staat was able to better secure the new cast pieces to the new steel.



Chase Park Plaza Partial In-Kind Replacement of Stone Sculptural Detail Before



Chase Park Plaza Partial In-Kind Replacement of Stone Sculptural Detail During



JAMES G STAAT
TUCKPOINTING & WATERPROOFING

Chase Park Plaza Partial In-Kind Replacement of Stone Sculptural Detail After



Retooling of Ornate Carved Stone Unit

Chase Park Plaza



Before

The mortar joints were deteriorated, and the stone was beginning to spall and fall apart.



During

Staat was able to remove the mortar to a sound mortar depth in these finely detailed areas and prep the stone for new coating. Taking care not to damage any edges in the process



After

Taking great care Staat was able to reinstall historically accurate mortar to match each change in depth and detail with the stone. Providing a new Dow coating will ensure a long life for the quality work



Chase Park Plaza Re-Tooling of Ornate Carved Stone Unit Before



JAMES G STAAT

TUCKPOINTING & WATERPROOFING

Chase Park Plaza Re-tooling of Ornate Carved Stone Unit During



JAMES G STAAT

TUCKPOINTING & WATERPROOFING

Chase Park Plaza Re-tooling of Ornate Carved Stone After



JAMES G STAAT
TUCKPOINTING & WATERPROOFING